



ANDROID CONTROLLED ROBOT CAR

S. Mohammed Ismail (1), I. Richards Infant Dhanaraj (2), M. Tharik sajeen (3)

*1,2,3 PG scholar, Department of Electronics, St.JOSEPH'S COLLEGE
(AUTONOMOUS), Tiruchirappalli, Tamilnadu, (India)*

ABSTRACT

The main aim of this project is to create designing a Robot that can be operated using Android Apps. The controlling of the Robot is done wirelessly through Android smart phone using the Bluetooth module feature present in it. Here in the project the Android smart phone is used as a remote control for operating the Robot. Android is a software stack for mobile devices that includes an operating system, middleware and key applications. Android boasts a healthy array of connectivity options, including Wi-Fi, Bluetooth, and wireless data over a cellular connection (for example, GPRS, EDGE (Enhanced Data rates for GSM Evolution), and 3G). Android provides access to a wide range of useful libraries and tools that can be used to build rich applications. Bluetooth is an open standard specification for a radio frequency (RF)-based, short-range connectivity technology that promises to change the face of computing and wireless communication. It is designed to be an inexpensive, wireless networking system for all classes of portable devices, such as laptops, PDAs (personal digital assistants), and mobile phones. The controlling device of the whole system is a Microcontroller. Bluetooth module, DC motors are interfaced to the Microcontroller. The data received by the Bluetooth module from Android smart phone is fed as input to the controller. The controller acts accordingly on the DC motors of the Robot. The robot in the project can be made to move in all the four directions using the Android phone. The direction of the robot is indicated using LED indicators of the Robot system. In achieving the task the controller is loaded with a program written using Embedded 'C' language.

Keywords: *Wireless, Android, Bluetooth, Arduino, Robotic Car*

I. INTRODUCTION

Nowadays smart phones are becoming more powerful with reinforced processors, larger storage capacities, richer entertainment function and more communication methods. Bluetooth is mainly used for data exchange to add new features to smart phones. Bluetooth technology, created by telecom vendor Ericsson in 1994, shows its advantage by integrating with smart phones. It has changed how people use digital device at home or office, and has transferred traditional wired digital devices into wireless devices. A host Bluetooth device is capable of communicating with up to seven Bluetooth modules at same time through one link. Considering its normal working area of within eight meters, it is



especially useful in home environment. Thank for Bluetooth technology and other similar techniques, with dramatic increase in Smartphone users, smart phones have gradually turned into an all-purpose portable device and provided people for their daily use. In recent years, an open-source platform Android has been widely used in smart phones. Android has complete software package consisting of an operating system, middleware layer and core applications. Different from other existing platform like iOS (iPhone OS), it comes with software development kit (SDK), which provides essential tools and Application. Using a Smartphone as the “brain” of a robot is already an active research field with several open opportunities and promising possibilities. In this report I present a review of current robots controlled by mobile phone and discuss a closed loop control systems using audio channels of mobile devices, such as phones and tablet computers. In my work, move the robot upward, backward, left and right side by the android application such as Arduino Bluetooth RC Car.

II. METHODOLOGY

Project development is not an easy task. It requires through study of the various component and their outcomes. The project is effective only if it can fulfill the objective that it aim to provide the project is implemented using various that are organized in a specific way so that the device is small and portable. Each component has a specific function to perform.

2.1 HARDWARE REQUIREMENT

This part consists of various components, which are as follows.

- ARDUINO UNO
- DC MOTORS
- L293D MOTOR DRIVER
- 9V BATTERY
- ROBOT BODY
- BLUETOOTH DEVICE

2.2 SOFTWARE REQUIREMENT

- ARDUINO IDE

2.3 ANDROID APPLICATIONS

- ARDUINO BLUETOOTH CONTROLLER



2.4 DEVICE IMPLEMENTATION

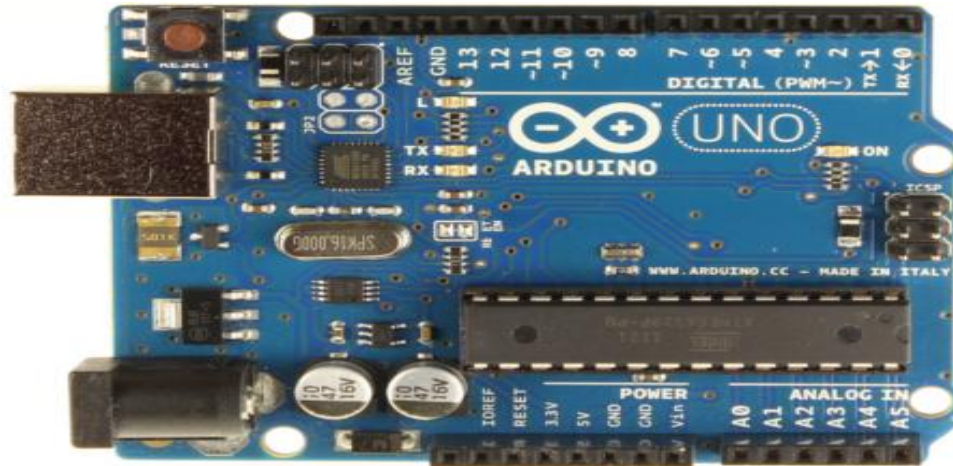


FIG: 2.4 ARDUINO UNO BOARD

Arduino is an open source, computer hardware and software company, project, and user community that designs and manufactures microcontroller kits for building digital devices and interactive objects that can sense and control objects in the physical world. The project's products are distributed as open-source hardware and software, which are licensed under the GNU Lesser General Public License (LGPL) or the GNU General Public License (GPL), permitting the manufacture of Arduino boards and software distribution by anyone. Arduino boards are available commercially in preassembled form, or as do-it-yourself kits.

Arduino is open-source hardware. The hardware reference designs are distributed under a Creative Commons Attribution Share-Alike 2.5 license and are available on the Arduino website. Layout and production files for some versions of the hardware are also available. The source code for the IDE is released under the GNU General Public License, version 2. Nevertheless, an official Bill of Materials of Arduino boards has never been released by Arduino staff.

Most Arduino boards consist of an Atmel 8AVR microcontroller (ATmega8, ATmega168, ATmega328, ATmega1280, ATmega2560) with varying amounts of flash memory, pins, and features. The 32-bit Arduino Due, based on the Atmel SAM3X8E was introduced in 2012. The boards use single or double-row pins or female headers that facilitate connections for programming and incorporation into other circuits. These may connect with add-on modules termed shields. Multiple, and possibly stacked shields may be individually addressable via an I²C serial bus. Most boards include a 5 V linear regulator and a 16 MHz crystal oscillator or ceramic resonator. Some designs, such as the Lily Pad, run at 8 MHz and dispense with the onboard voltage regulator due to specific form-factor restrictions.



Arduino microcontrollers are pre-programmed with a boot loader that simplifies uploading of programs to the on-chip flash memory. The default boot loader of the Arduino UNO is the boot loader. Boards are loaded with program code via a serial connection to another computer. Some serial Arduino boards contain a level shifter circuit to convert between RS-232 logic levels and transistor–transistor logic (TTL) level signals. Current Arduino boards are programmed via Universal Serial Bus (USB), implemented using USB-to-serial adapter chips such as the FTDI FT232. Some boards, such as later-model Uno boards, substitute the FTDI chip with a separate AVR chip containing USB-to-serial firmware, which is reprogrammable via its own ICSP header. Other variants, such as the Arduino Mini and the unofficial Boarduino, use a detachable USB-to-serial adapter board or cable, Bluetooth or other methods, when used with traditional microcontroller tools instead of the Arduino IDE, standard AVR in-system programming (ISP) programming is used.

The Arduino board exposes most of the microcontroller's I/O pins for use by other circuits. Several plug-in application shields are also commercially available. The Arduino Nano, and Arduino-compatible Bare Bones Board and Boarduinoboard may provide male header pins on the underside of the board that can plug into solderless breadboards.

The Arduino/Genuino Uno can be programmed with the (Arduino Software (IDE)). Select "Arduino/Genuino Uno from the Tools > Board menu (according to the microcontroller on your board). For details, see the reference and tutorials.

The ATmega328 on the Arduino/Genuino Uno comes preprogrammed with a bootloader that allows you to upload new code to it without the use of an external hardware programmer. It communicates using the original STK500 protocol (reference, C header files).

The ATmega16U2 (or 8U2 in the rev1 and rev2 boards) firmware source code is available in the Arduino repository. The ATmega16U2/8U2 is loaded with a DFU boot loader, which can be activated by:

The Arduino Uno has a resettable polyfuse that protects your computer's USB ports from shorts and overcurrent. Although most computers provide their own internal protection, the fuse provides an extra layer of protection. If more than 500 mA is applied to the USB port, the fuse will automatically break the connection until the short or overload is removed.

2.4.1 DIFFERENCES WITH OTHER BOARDS

The Uno differs from all preceding boards in that it does not use the FTDI USB-to-serial driver chip. Instead, it features the Atmega16U2 (Atmega8U2 up to version R2) programmed as a USB-to-serial converter.

The Arduino Uno board can be powered via the USB connection or with an external power supply. The power source is selected automatically.



External (non-USB) power can come either from an AC-to-DC adapter (wall-wart) or battery. The adapter can be connected by plugging a 2.1mm center-positive plug into the board's power jack. Leads from a battery can be inserted in the GND and Vin pin headers of the POWER connector.

The board can operate on an external supply from 6 to 20 volts. If supplied with less than 7V, however, the 5V pin may supply less than five volts and the board may become unstable. If using more than 12V, the voltage regulator may overheat and damage the board. The recommended range is 7 to 12 volts.

The input voltage to the Arduino/Genuino board when it's using an external power source (as opposed to 5 volts from the USB connection or other regulated power source). You can supply voltage through this pin, or, if supplying voltage via the power jack, access it through this pin 5V. This pin outputs a regulated 5V from the regulator on the board. The board can be supplied with power either from the DC power jack (7 - 12V), the USB connector (5V), or the VIN pin of the board (7-12V). Supplying voltage via the 5V or 3.3V pins bypasses the regulator, and can damage your board. We don't advise it.

IOREF-This pin on the Arduino/Genuino board provides the voltage reference with which the microcontroller operates. A properly configured shield can read the IOREF pin voltage and select the appropriate power source or enable voltage translators on the outputs to work with the 5V or 3.3V.

The ATmega328 has 32 KB (with 0.5 KB occupied by the bootloader). It also has 2 KB of SRAM and 1 KB of EEPROM (which can be read and written with the EEPROM library).

See the mapping between Arduino pins and ATmega328P ports. The mapping for the Atmega8, 168, and 328 is identical.

Each of the 14 digital pins on the Uno can be used as an input or output, using pinMode(), digitalWrite(), and digitalRead() functions. They operate at 5 volts. Each pin can provide or receive 20 mA as recommended operating condition and has an internal pull-up resistor (disconnected by default) of 20-50k ohm. A maximum of 40mA is the value that must not be exceeded on any I/O pin to avoid permanent damage to the microcontroller.

Arduino Uno has a number of facilities for communicating with a computer, another Arduino/Genuino board, or other microcontrollers. The ATmega328 provides UART TTL (5V) serial communication, which is available on digital pins 0 (RX) and 1 (TX). An ATmega16U2 on the board channels this serial communication over USB and appears as a virtual com port to software on the computer. The 16U2 firmware uses the standard USB COM drivers, and no external driver is needed. However, on Windows, a .in file is required.

The Arduino Software (IDE) includes a serial monitor which allows simple textual data to be sent to and from the board. The RX and TX LEDs on the board will flash when data is being transmitted via the USB-to-serial chip and USB



connection to the computer (but not for serial communication on pins 0 and 1). A Software Serial library allows serial communication on any of the Uno's digital pins.

The ATmega328 also supports I2C (TWI) and SPI communication. The Arduino Software (IDE) includes a Wire library to simplify use of the I2C bus; see the documentation for details. For SPI communication, use the SPI library.

2.4.2 TABLE OF CONFIGURATION

Microcontroller	ATmega328P
Operating Voltage	5V
Input Voltage (recommended)	7-12V
Input Voltage (limit)	6-20V
Digital I/O Pins	14 (of which 6 provide PWM output)
PWM Digital I/O Pins	6
Analog Input Pins	6
DC Current per I/O Pin	20 Ma
DC Current for 3.3V Pin	50 Ma
Flash Memory	32 KB (ATmega328P) of which 0.5 KB used by bootloader
SRAM	2 KB (ATmega328P)
EEPROM	1 KB (ATmega328P)
Clock Speed	16 MHz



LED_BUILTIN	13
Length	68.6 mm
Width	53.4 mm
Weight	25 g

2.4.2 TECHNICAL SPECIFICATION OF ARDUINO UNO

2.5DC MOTOR



FIG: 2.5 DC MOTOR

A DC motor is any of a class of rotary electrical machines that converts direct current electrical power into mechanical power. The most common types rely on the forces produced by magnetic fields. Nearly all types of DC motors have some internal mechanism, either electromechanical or electronic, to periodically change the direction of current flow in part of the motor.



DC motors were the first type widely used, since they could be powered from existing direct-current lighting power distribution systems. A DC motor's speed can be controlled over a wide range, using either a variable supply voltage or by changing the strength of current in its field windings. Small DC motors are used in tools, toys, and appliances. The universal motor can operate on direct current but is a lightweight motor used for portable power tools and appliances. Larger DC motors are used in propulsion of electric vehicles, elevator and hoists, or in drives for steel rolling mills. The advent of power electronics has made replacement of DC motors with AC motors possible in many applications.

2.6 APPLICATION OF D.C MOTORS

It is seen from the earlier sections that the d.c.machine is capable of having variety of torque-speed characteristics depending on the circuit conditions. The need for generating these characteristics will be clear only when they are seen along with the characteristics of the loads that they operate with.

Even though a detailed treatment of motor load systems is outside the scope here, it may be useful to look into the typical torque-speed characteristics of some of the common loads.

Loads are broadly divided into,

(a) Passive loads

(b) Active loads

They may be unidirectional in operation or work in either direction (Reversible loads). Passive loads absorb the mechanical energy developed by the motors while active loads are capable of working as both sinks and sources for mechanical energy. The direction of rotation may be taken to be clockwise/counter clockwise rotation.

Normally the direction in which the load operates most of the time is taken as the positive direction of rotation. Any torque which accelerates the motor load system in the positive direction of rotation is termed as a positive torque. With this rotation torques of motors, generators or loads can be represented graphically on a four quadrant diagram.

The torque being taken as an independent variable is represented along the x-axis. Y-axis represents the speed. The characteristics a, b, and c correspond to frictional torque, cutting torque and fan torque respectively. While the frictional torque is not a function of speed, the cutting torque is proportional to the speed and the fan torque varies as the square of the speed.

These can only absorb mechanical power and hence are represented in quadrant II for positive direction of rotation. Similar loads produce characteristics in quadrant IV for negative direction of rotation.



2.7 MOTOR DRIVER IC L293D

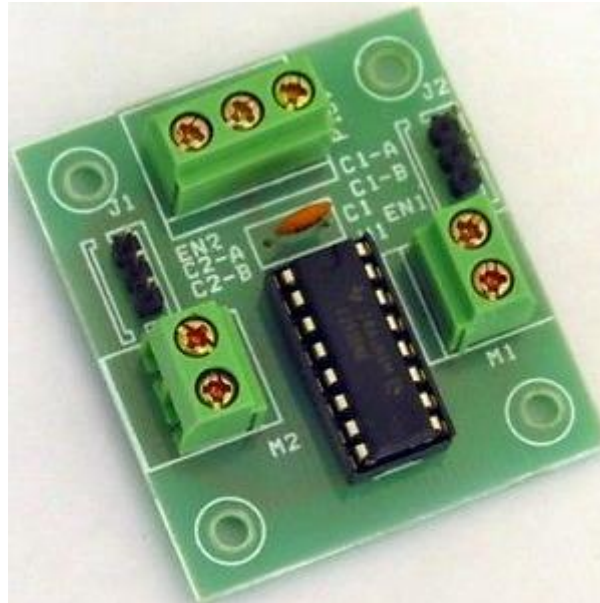


FIG: 2.7 L293D MOTOR DRIVER IC BOARD

L293D is a typical Motor driver or Motor Driver IC which allows DC motor to drive on either direction. L293D is a 16-pin IC which can control a set of two DC motors simultaneously in any direction. It means that you can control two DC motor with a single L293D IC. Dual H-bridge Motor Driver integrated circuit (IC). It works on the concept of H-bridge. H-bridge is a circuit which allows the voltage to be flown in either direction.

In a single L293D chip there are two h-Bridge circuit inside the IC which can rotate two dc motor independently. Due its size it is very much used in robotic application for controlling DC motors. Given below is the pin diagram of a L293D motor controller. There are two Enable pins on l293d. Pin 1 and pin 9, for being able to drive the motor, the pin 1 and 9 need to be high. For driving the motor with left H-bridge you need to enable pin 1 to high. And for right H-Bridge you need to make the pin 9 to high. If anyone of the either pin1 or pin9 goes low then the motor in the corresponding section will suspend working. It's like a switch.



2.7.1 ICL293D STRUCTURE



FIG: 2.7.1 IC L293D LAYOUT



FIG: 2.7.2 PIN DIAGRAM OF IC L293D

2.7.2 TABLE OF CONFIGURATION

PIN NO	FUNCTION	NAME
1	Enable pin for Motor 1; active high	Enable 1,2
2	Input 1 for Motor 1	Input 1
3	Output 1 for Motor 1	Output 1
4	Ground (0V)	Ground



5	Ground (0V)	Ground
6	Output 2 for Motor 1	Output 2
7	Input 2 for Motor 1	Input 2
8	Supply voltage for Motors; 9-12V (up to 36V)	Vcc2
9	Enable pin for Motor 2; active high	Enable 3,4
10	Input 1 for Motor 1	Input 3
11	Output 1 for Motor 1	Output 3
12	Ground (0V)	Ground
13	Ground (0V)	Ground
14	Output 2 for Motor 1	Output 4
15	Input2 for Motor 1	Input 4
16	Supply voltage; 5V (up to 36V)	Vcc1

2.7.2 PIN DESCRIPTION OF MOTOR DRIVER L293D

2.8 BLUETOOTH DEVICE



FIG:2.8 HC-05 BLUETOOTH MODULE

HC- 05 module is an easy to use Bluetooth SPP (Serial Port Protocol) module, designed for transparent wireless serial connection setup. The HC-05 Bluetooth Module can be used in a Master or Slave configuration, making it a great solution for wireless communication. This serial port Bluetooth module is fully qualified Bluetooth V2.0+EDR (Enhanced Data Rate) 3Mbps Modulation with complete 2.4GHz radio transceiver and baseband. It uses CSR Blue core 04- External single chip Bluetooth system with CMOS technology and with AFH (Adaptive Frequency Hopping Feature). The Bluetooth module HC-05 is a MASTER/SLAVE module. By default the factory setting is SLAVE. The Role of the



module (Master or Slave) can be configured only by AT COMMANDS. The slave modules cannot initiate a connection to another Bluetooth device, but can accept connections. Master module can initiate a connection to other devices.

2.8.1 HARDWARE FEATURES

- Typical -80dBm sensitivity
- Up to +4dBm RF transmit power
- Low Power 1.8V Operation ,1.8 to 3.6V I/O
- PIO control
- UART interface with programmable baud rate
- With integrated antenna
- With edge connector

2.8.2 SOFTWARE FEATURES

- Default Baud rate: 38400
- Given a rising pulse in PIO0, device will be disconnected.
- Status instruction port PIO1: low-disconnected, high-connected
- PIO10 and PIO11 can be connected to red and blue led separately. When master and slave are paired, red and blue led blinks 1time/2s in interval, while disconnected only blue led blinks 2times/s.
- Auto-connect to the last device on power as default.
- Permit pairing device to connect as default.
- Auto-pairing PINCODE:"0000" as default
- Auto-reconnect in 30 min when disconnected as a result of beyond the range of connection.



2.9 SOFTWARE IMPLEMENTATION



FIG: 2.9 ARDUINO SOFTWARE (VERSION 1.8.1)

The smart microcontroller unit named as Arduino Uno can be programmed with the Arduino software there in no any requirement for installing other software rather than Arduino. Firstly, Select "Arduino Uno from the Tools , Board menu (according to the microcontroller on your board).

The IC used named as ATmega328 on the Arduino Uno comes pre burned with a boot loader that allows you to upload new code to it without the use of an external hardware programmer.

Communication is using the original STK500 protocol (reference, C header files).We can also bypass the boot loader and programs the microcontroller through the ICSP (In Circuit Serial Programming) header. The ATmega16U2 (or 8U2 in the rev1 and rev2 boards) firmware source code is available

. The RX and TX LEDs on the board will flash when data is being transmitted via the USB-to-serial chip and USB connection to the computer (but not for serial communication on pins 0 and 1).

A Software Serial library allows for serial communication on any of the Uno's digital pins. The ATmega328 also supports I2C (TWI) and SPI communication.

The Arduino software includes a Wire library to simplify use of the I2C bus. Arduino programs are written in C or C++ and the program code written for Arduino is called sketch.

The Arduino IDE uses the GNU tool chain and AVR Library to compile programs, and for uploading the programs it uses avrdude.

As the Arduino platform uses Atmel microcontrollers, Atmel's development environment, AVR Studio or the newer Atmel Studio, may also be used to develop software for the Arduino.

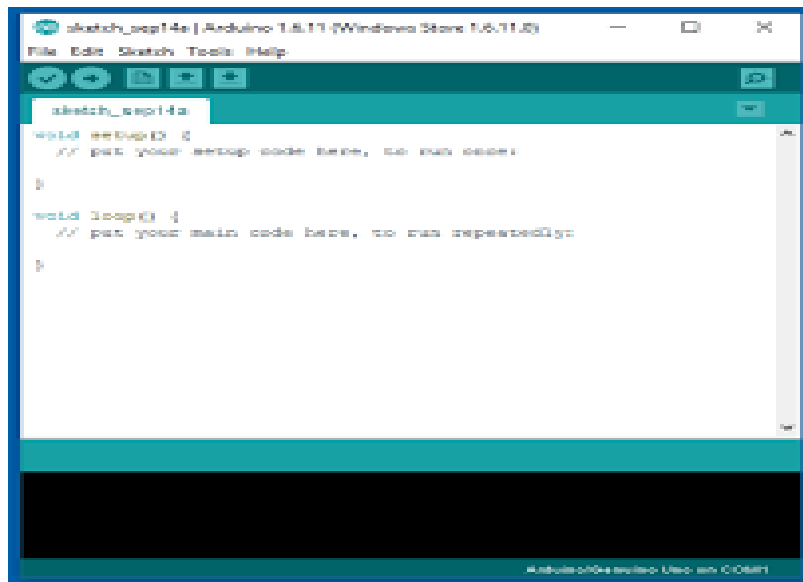


FIG: 2.9.1 ARDUINO SOFTWARE INTERFACE

III. BLOCK DIAGRAM

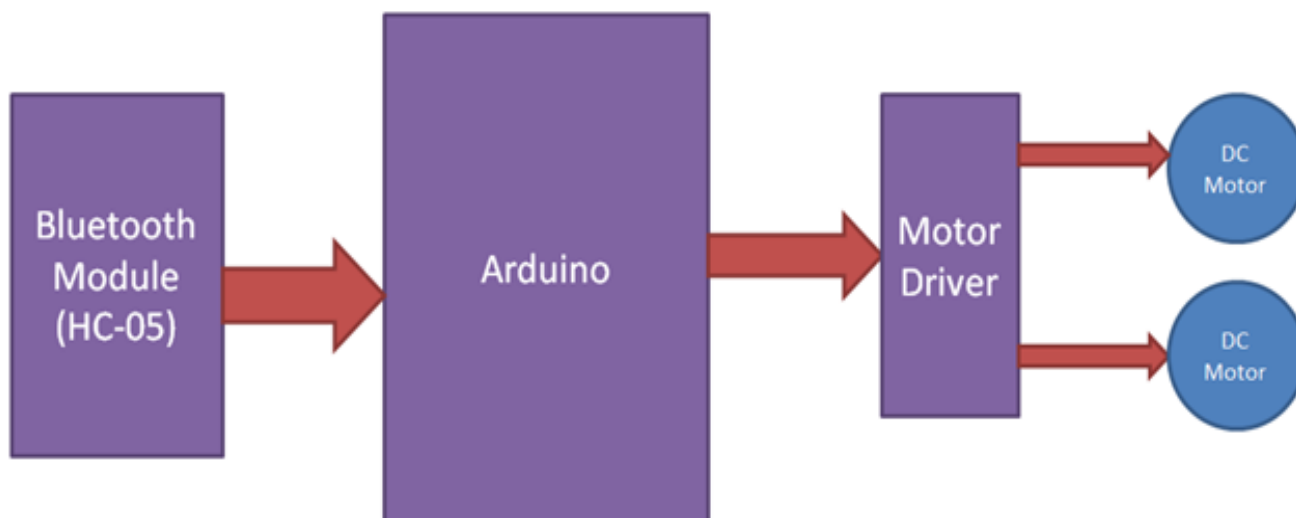


FIG: 3.1 BLOCK DIAGRAM OF ARDUINO CONTROLLED ROBOT CAR



3.1 BLOCK DIAGRAM EXPLANATION

In this circuit I have used Arduino Uno board to control the robot car. This car have two dc motors at its front and rear side. Front side motor is used for giving direction to car means turning left or right side (like real car steering feature). And rear side motor is used for driving the car in forward and backward direction. A Bluetooth module is used to receive command from android phone and Arduino UNO is used for controlling the whole system. Bluetooth controlled car moves according to button touched in the android Bluetooth mobile app. To run this project first we need to download Bluetooth app form Google play store. We can use any Bluetooth app that supporting or can send data.

3.2 CIRCUIT DIAGRAM

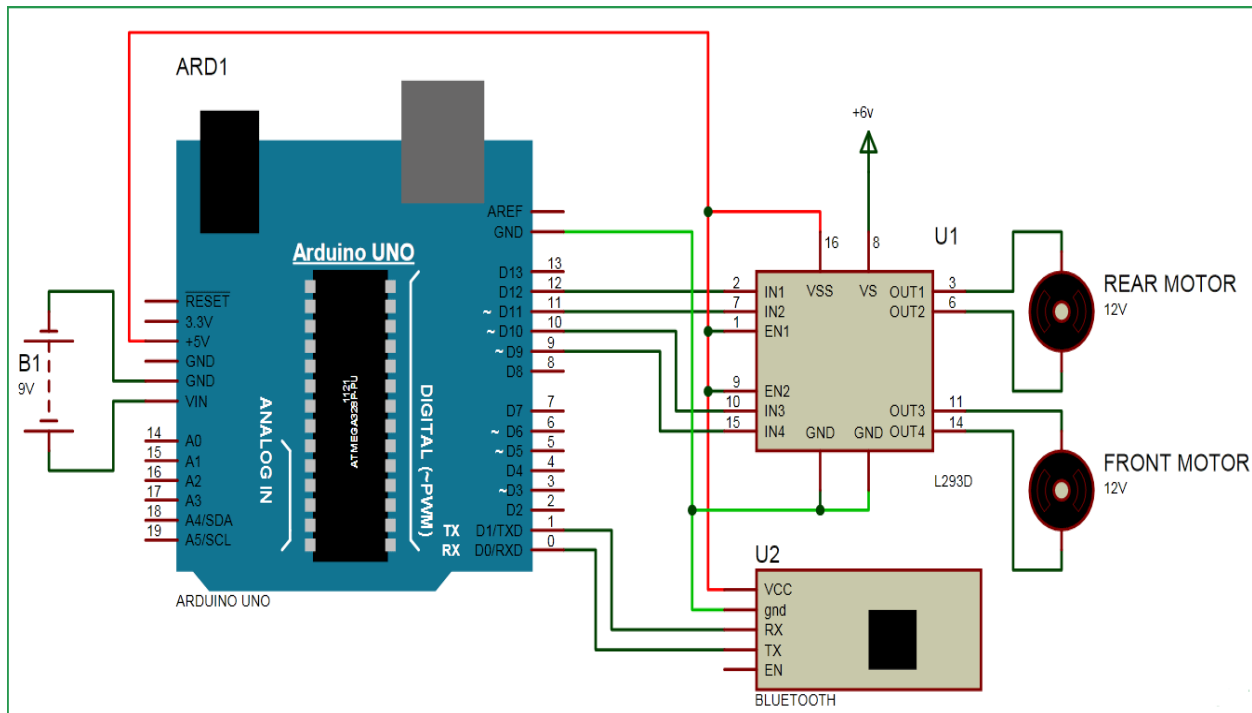


FIG: 3.2 CIRCUIT DIAGRAM OF THE PROJECT

3.2.1 CIRCUIT DIAGRAM EXPLANATION

Bluetooth controlled Robot car is shown in above figure. A Motor driver is connected to Arduino to run the car. Motor driver's input pins 2, 7, 10 and 15 are connected to Arduino's digital pin number 12, 11, 10 and 9 respectively. Here we have used two DC motors to driver car in which one motor is connected at output pin of motor driver 3 and 6 and another motor is connected at 11 and 14. A 9 volt Battery is also used to power the motor driver for driving motors. Bluetooth



module's RX and TX pins are directly connected at TX and RX of Arduino. And vcc and ground pin of Bluetooth module is connected at +5 volt and Ground of Arduino. And a 9 volt battery is used for power the circuit at Arduino's VIN pin.

IV. ANDROID CONTROLLER APPLICATION

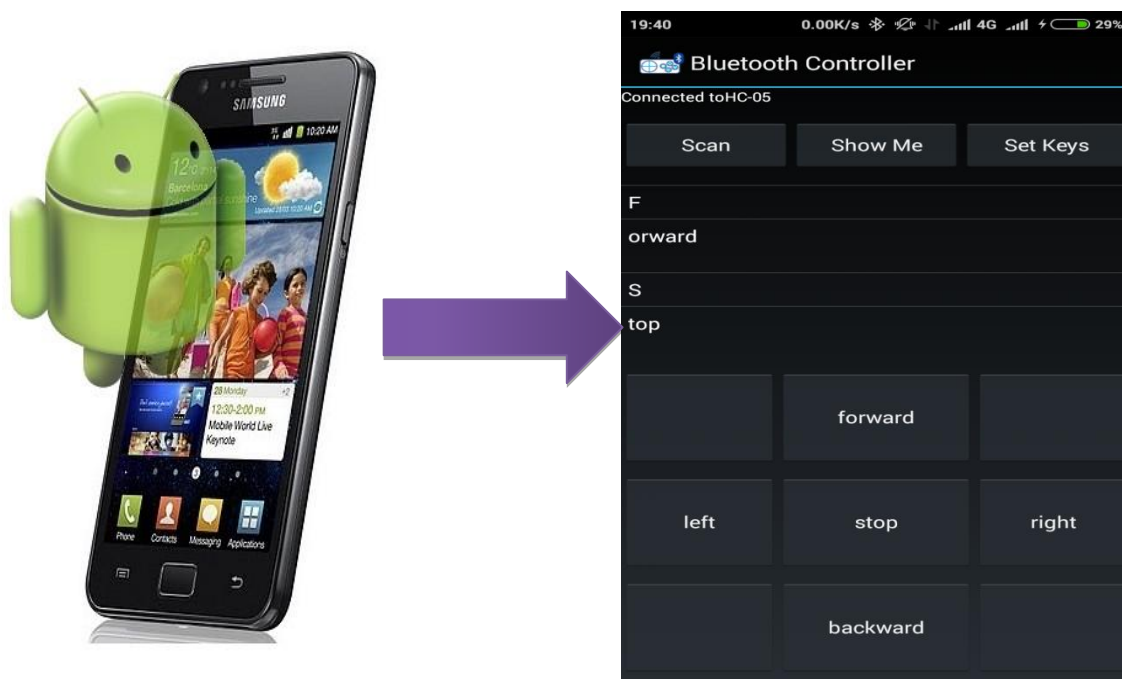


FIG: 4.1 BLUETOOTH CONTROLLER APPLICATION

In this project we will control the robot using Android Phone by using a Bluetooth Controller application which we will get from Android Play store. By installing the application we can move the robot in four directions.

When we touch forward button in Bluetooth controller app then car start moving in forward direction and moving continues forward until next command comes.

When we touch backward button in Bluetooth controller app then car start moving in reverse direction and moving continues reverse until next command comes.



When we touch left button in Bluetooth controller app then car start moving in left direction and moving continues left until next command comes. In this condition front side motor turns front side wheels in left direction and rear motor runs in forward direction.

When we touch right button in Bluetooth controller app then car start moving in right direction and moving continues right until next command comes. In this condition front side motor turns front side wheels in right direction and rear motor runs in forward direction.

4.1.1 FUTURE ENHANCEMENTS

➤ ADVANCED MOTION

- Robot arm controlled by servo motor

➤ OBSTACLE AVOIDANCE

- Install proximity sensor, develop algorithms to steer around / back up when obstacles detected

➤ VISION

- Use camera to transmit frames back to Android application for display to user
- Bluetooth too low-bandwidth; switch to Wi-Fi

V.CONCLUSION

This is indeed a cost-effective and efficient project. The novelty lies in the fact that it is a cost-effective project with a simple and easy to use interface compared to existing ones. Also the Bluetooth RC Controller application is more user friendly. The robot is small in size so it can be used in spying purpose. With few additions and modifications, this robot can be used in army for detecting and disposing hidden land mines. The robot can be used for surveillance. In future we can interface sensors to this robot so that it can monitor some parameters and we can improve the efficiency using Internet of Things (IOT) technology. We can also add wireless camera, in order to incorporate other security features It is feasible to implement Bluetooth communication between Smartphone and microcontroller. It can be used in various industries for picking various objects where human intervention is not desired. On a large scale, it can be used to develop robots with military applications. It can be used to target enemy without any human being crossing the territory. It provides for more development of applications based on android operating system. The development of apps for Android in Android SDK is easy and free of cost. With tremendous smart phone in markets, it is bound to have many more applications in near future. In this project hardware setup is constructed using Arduino Uno and the programming is compiled in the Arduino IDE software and finally Robot car is controlled by the Arduino using Bluetooth module.

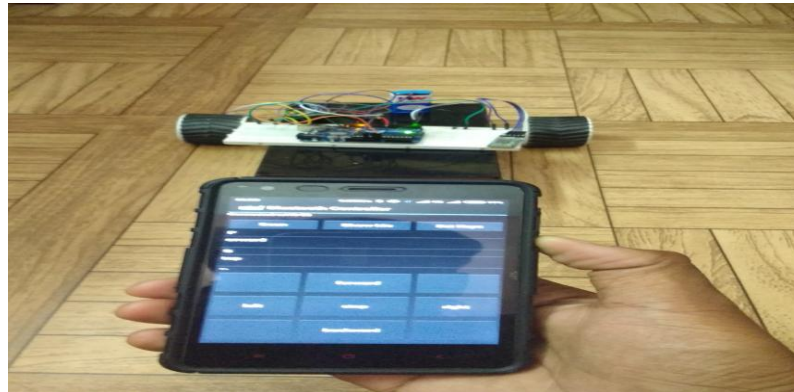


FIG: 5.1 SNAPSHOT OF BLUETOOTH BASED SMART PHONE CONTROL ROBOT PROJECT

REFERENCES

- [1] Xiaoluet.al. "Robot control design based on smartphone." Control and Decision Conference (CCDC), 2013 25th Chinese. IEEE, 2013
- [2] Yeon-Gyunkim et.al. "Smartphone-controlled user calling system for a mobile robot." Robotics (ISR), 2013 44th International Symposium on. IEEE, 2013.
- [3] Rouanet, Pierre, et.al. "The impact of human– robot interfaces on the learning of visual objects." Robotics, IEEE Transactions on 29.2 (2013): 525-541.
- [4] Tatiana Alexenko et.al. "Android-based speech processing for eldercare robotics." Proceedings of the companion publication of the 2013 international conference on intelligent user interfaces companion. ACM, 2013.
- [5] M. Young, The Technical Writer's Handbook. Mill Valley, CA: University Science, 1989.
- [6] <https://developer.android.com/training/basics/firstapp/index.html>
- [7] <https://www.codeproject.com/Articles/628894/Learn-How-to-Develop-Android-Application>
- [8] <https://www.tutorialspoint.com/android/>
- [9] <http://www.coreservlets.com/android-tutorial>